

A state-of-the-art used-oil analysis program.

To help you monitor lubricant and equipment condition and increase equipment reliability, Mobil Industrial Lubricants offers an oil analysis program specifically tailored to monitor critical indicators in used oil based on leading equipment builder specifications and international standards. This program is backed by our FES team that can train your personnel to run an effective used-oil analysis program and interpret analysis results.

Our innovative Turbine Commissioning Program makes your job easier.

This comprehensive service helps you prepare your turbine lubrication system and turbine oil for start-up, ensuring timely and reliable operation. To help you meet equipment builder requirements and to begin a comprehensive lubrication program at your new installation, we can offer product recommendations, turbine lubrication system and oil preparation, and additional postcommissioning integrated lubrication services.

So team up with Mobil Industrial Lubricants for continually advancing, standard-setting products and services. And take advantage of our leading-edge lubricant technology and unmatched global expertise to help you unleash the productivity of your operation.

Supported by unsurpassed industry expertise.

Our highly experienced engineers work closely with customers and leading equipment builders for unique insights into their new technology and lubrication requirements. These insights then help guide our product development process. This gives our research scientists and lubricant formulators the ability to build leading-edge lubricants for the most demanding peak power, gas compression, or captive power applications from the ground up — making them highly effective in the equipment they lubricate. Our knowledgeable Field Engineering Services (FES) team can offer you professional advice on sound lubrication practices, proper lubricant selection, equipment troubleshooting, and other lubrication services that will help you run your plant

longer and in top condition.

Backed by extensive builder approvals and proven field performance.

Thoroughly tested before they are commercialized, Mobil™ industrial lubricants and greases are well supported by equipment builder approvals. For example, the new Mobil DTE™ 700 Series surpasses 19 industry and equipment builder specifications for gas and steam turbine oils. And the Mobil DTE™ 800 Series, our top-of-the-line turbine oils, has delivered significant savings for customers through extended oil life.

continued on back page

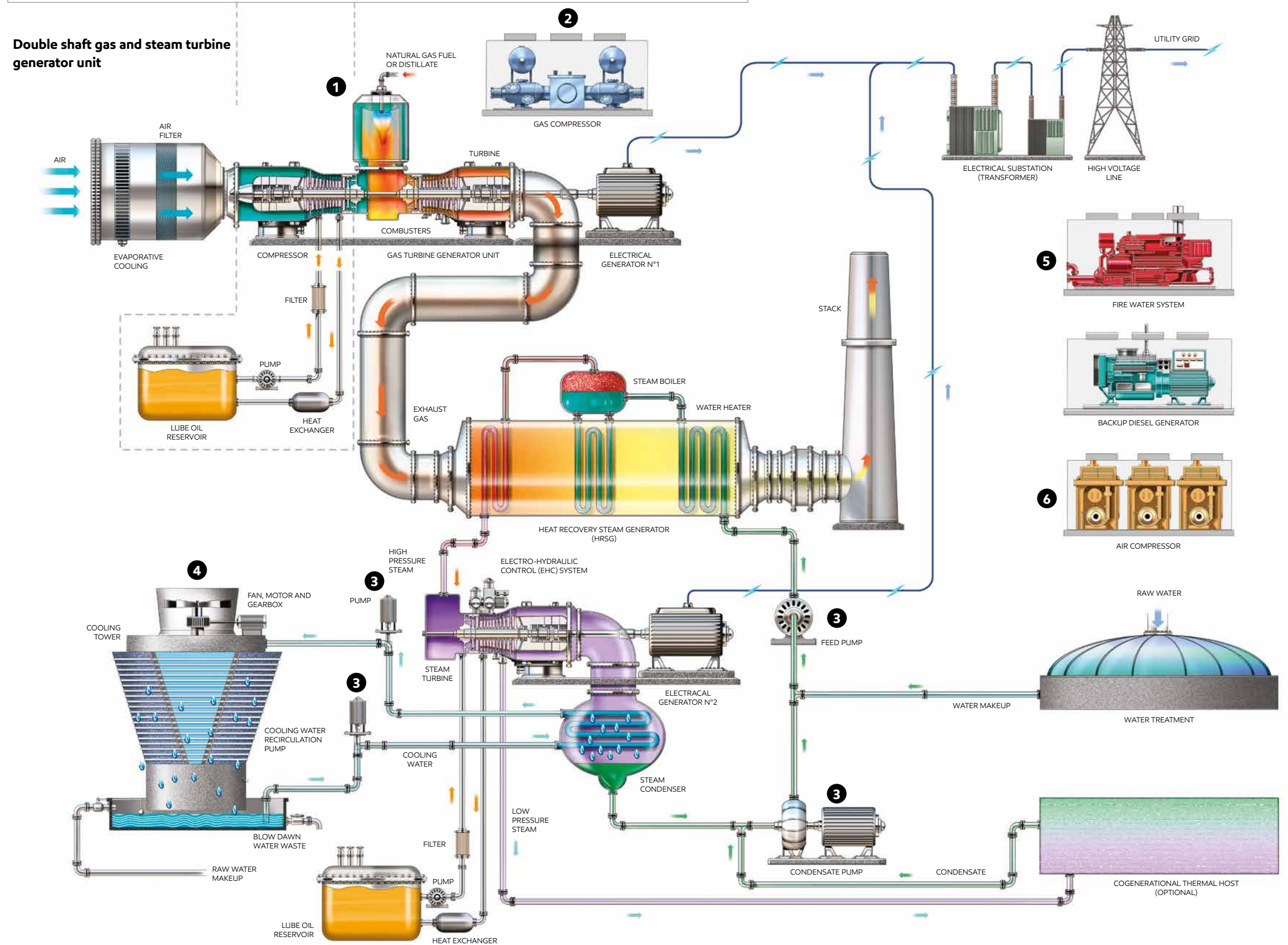
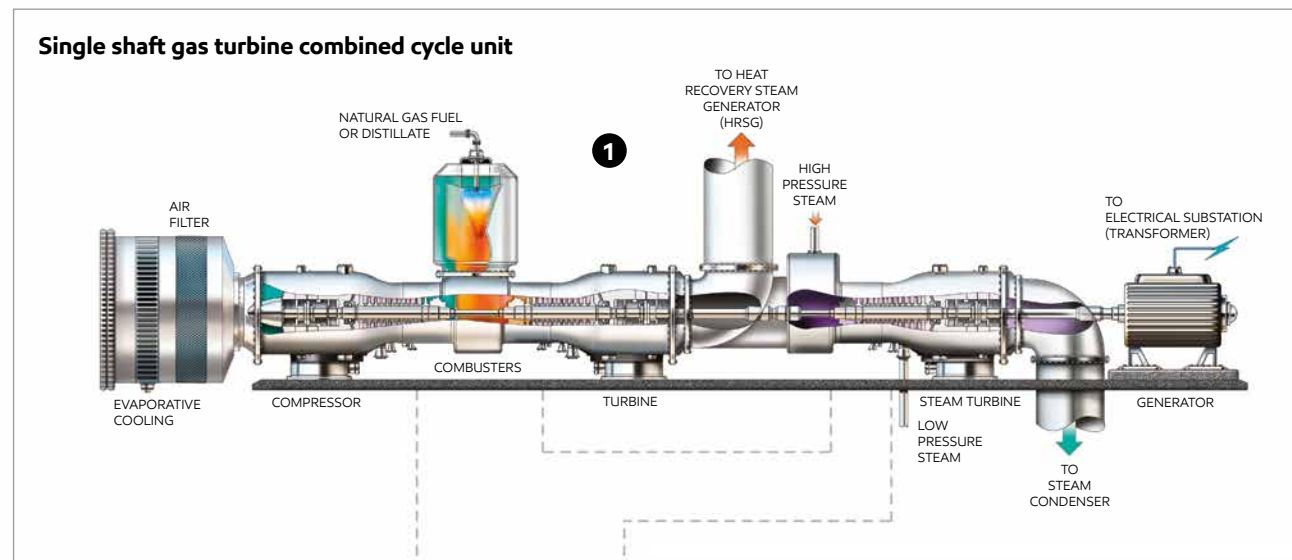


For more information on these and other Mobil™ lubricants and services, please contact your local company representative or visit mobilindustrial.com.

How we help keep your gas and steam turbine power plant running better – longer.

Proven performance is the foundation of Mobil™-branded products – each one formulated to offer outstanding equipment protection and long oil life. These are just a few of our high-performance series for your operation:

- 1 Turbine**
 - *Turbine Reservoir* – Mobil SHC™ 800, Mobil DTE™ 800, Mobil DTE™ 700
 - *Generator Bearings* – Mobil SHC 800, Mobil DTE 800, Mobil DTE 700
 - *EHC System* – Mobil DTE 800, Mobil DTE 700, Mobil Pyrotec HFD 46 (fire-resistant applications)
- 2 Gas Compressors**
 - *Compressors* – Mobil SHC™ 600
- 3 Steam Loop / Feed Water Pumps**
 - *Pumps* – Mobil DTE 700, Mobil SHC 600
 - *Electric Motors* – Mobil SHC 600, Mobil Polyrex™ EM, Mobil DTE 700, Mobil DTE Oil Named, Mobilith SHC™
- 4 Cooling Towers**
 - *Gear Drives* – Mobil SHC 600
 - *Electric Motors* – Mobil Polyrex EM
- 5 Backup Generators / Fire Water Pumps**
 - *Diesel Engines* – Mobil Delvac™ 1300 Super, Mobil Delvac™ 1600
- 6 Air Compressors**
 - *Compressors* – Mobil Rarus SHC™ 1020 (screw), Mobil Rarus™ 800 (reciprocating)
- 7 Miscellaneous (not shown)**
 - *Forced Draft (FD) Fans* – Mobil SHC 600
 - *Induced Draft (ID) Fans* – Mobil SHC 600



Note: Schematic and product recommendations are intended as a general guide only. Products listed are typically the product series names. Please refer to equipment builder manual for final lubrication recommendations or consult your Mobil industrial lubricants team for additional products. NOT TO SCALE.